

Light Duty Hand Crank Hose Reels

Air/Water - 3/8", 1/2" I.D.

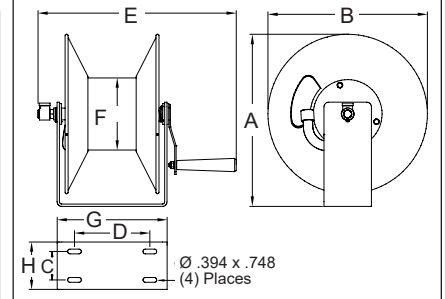
- Designed for lighter-duty applications that require longer lengths of low pressure hose
- Incorporates a balanced brass swivel, brass inlet, lighter weight components, and forward-thinking design
- All reels feature a drag break to prevent de-spooling when reel is not in use



CU6050LN

Additional Series C Models
Pressure Wash Reels - Page 23

Dimensions								
	1		2		3		4	
	in	mm	in	mm	in	mm	in	mm
A	11 ¹ / ₂	292	11 ¹ / ₂	292	14 ³ / ₈	365	14 ³ / ₈	365
B	10 ¹ / ₂	267	10 ¹ / ₂	267	13 ¹ / ₄	337	13 ¹ / ₄	337
C	2	51	2	51	2 ³ / ₈	60	2 ³ / ₈	60
D	6 ⁵ / ₈	168	11 ¹ / ₈	283	6 ¹ / ₄	159	10 ¹ / ₄	260
E	16 ³ / ₄	425	21 ¹ / ₈	537	16 ³ / ₄	425	20 ⁷ / ₈	530
F	4	102	4	102	6	152	6	152
G	9 ³ / ₈	238	13 ⁷ / ₈	352	9 ¹ / ₄	235	13 ¹ / ₄	337
H	3 ³ / ₈	86	3 ³ / ₈	86	4	102	4	102



Model without hose	Shipping Weight		Hose Capacity				Max Pressure	NPT(F) Reel Inlet	NPT(F) Reel Outlet	Size Index Page	Size Index #			
	lbs	kg	I.D.	O.D.	Length									
Low Pressure Air/Water Reels Maximum Temperature 150 °F (65 °C)														
CU6050LN	12	5	3/8	10	.600	15	50	15	300	21	3/8	3/8	----	1
CT6050LN	13	6	3/8	10	.600	15	50	15	300	21	3/8	3/8	23	1
CU6100LN	16	7	3/8	10	.600	15	100	30	300	21	1/2	1/2	----	2
CU8050LN	13	6	1/2	13	.750	19	50	15	300	21	1/2	1/2	----	3
CT8050LN	13	6	1/2	13	.750	19	50	15	300	21	1/2	1/2	23	1
CU8100LN	20	9	1/2	13	.750	19	100	30	300	21	1/2	1/2	----	4

Medium Duty Hand Crank Hose Reels

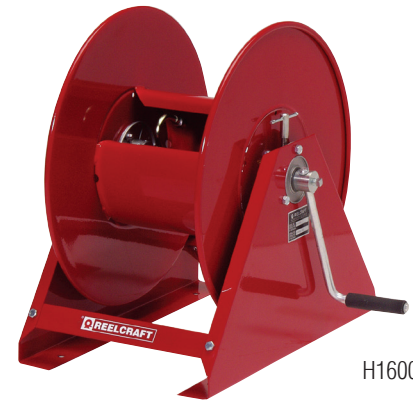
Air/Water - 3/8", 1/2", 3/4" I.D.



- Economical reel designed for medium duty applications requiring long lengths of hose
- Suitable for plant or field use such as turf care, pest control, steam cleaning, and more
- The T-handle tensioning device allows proper tension to be applied to the spool
- Hand crank handle can easily be rotated out of the way by loosening the set screw
- Shipped completely assembled, ready to install

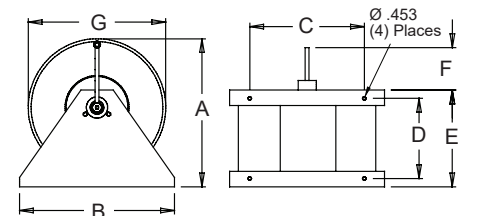
Additional Series H Models

Stainless Steel Reels - Page 19
Pressure Wash Reels - Page 23



H16000

Dimensions								
	1		2		3		4	
	in	mm	in	mm	in	mm	in	mm
A	19	483	19	483	18 ⁷ / ₈	479	20 ¹ / ₈	413
B	20	508	20	508	14	356	17 ³ / ₄	425
C	15	381	15	381	10	254	10	254
D	10	254	16	407	16	407	6 ³ / ₈	162
E	12 ¹ / ₂	318	18 ¹ / ₂	470	18 ¹ / ₂	470	5 ¹ / ₂	140
F	5 ³ / ₄	146	5 ³ / ₄	146	5 ³ / ₄	146	5 ³ / ₄	146
G	17 ³ / ₄	451	17 ³ / ₄	451	15 ³ / ₁₆	386	17 ³ / ₄	451



Model without hose	Shipping Weight		Hose Capacity				Max Pressure	NPT(F) Reel Inlet	NPT(F) Reel Outlet	Size Index #			
	lbs	kg	I.D.	O.D.	Length								
Low Pressure Air/Water Reels Maximum Temperature 150 °F (65 °C)													
H16000	32	15	3/8	10	.600	15	300	91	500	35	3/8	1/4	1
H18000	34	15	1/2	13	.750	19	200	61	1000	69	1/2	1/2	1
H19000	33	15	3/4	19	1.075	27	105	32	1000	69	3/4	3/4	1
H29005	36	16	3/4	19	1.075	27	100	30	1000	69	3/4	3/4	3
H29000	41	19	3/4	19	1.075	27	150	46	1000	69	3/4	3/4	2
Medium Pressure Oil Reels Maximum Temperature 210 °F (99 °C)													
H16000 M	32	15	3/8	10	.710	18	300	91	3000	207	1/2	3/8	1
H18000 M	34	15	1/2	13	.850	22	200	61	3000	207	1/2	1/2	1

CAUTION: To prevent drum damage fully extend and pressurize hose and rewind on the reel.